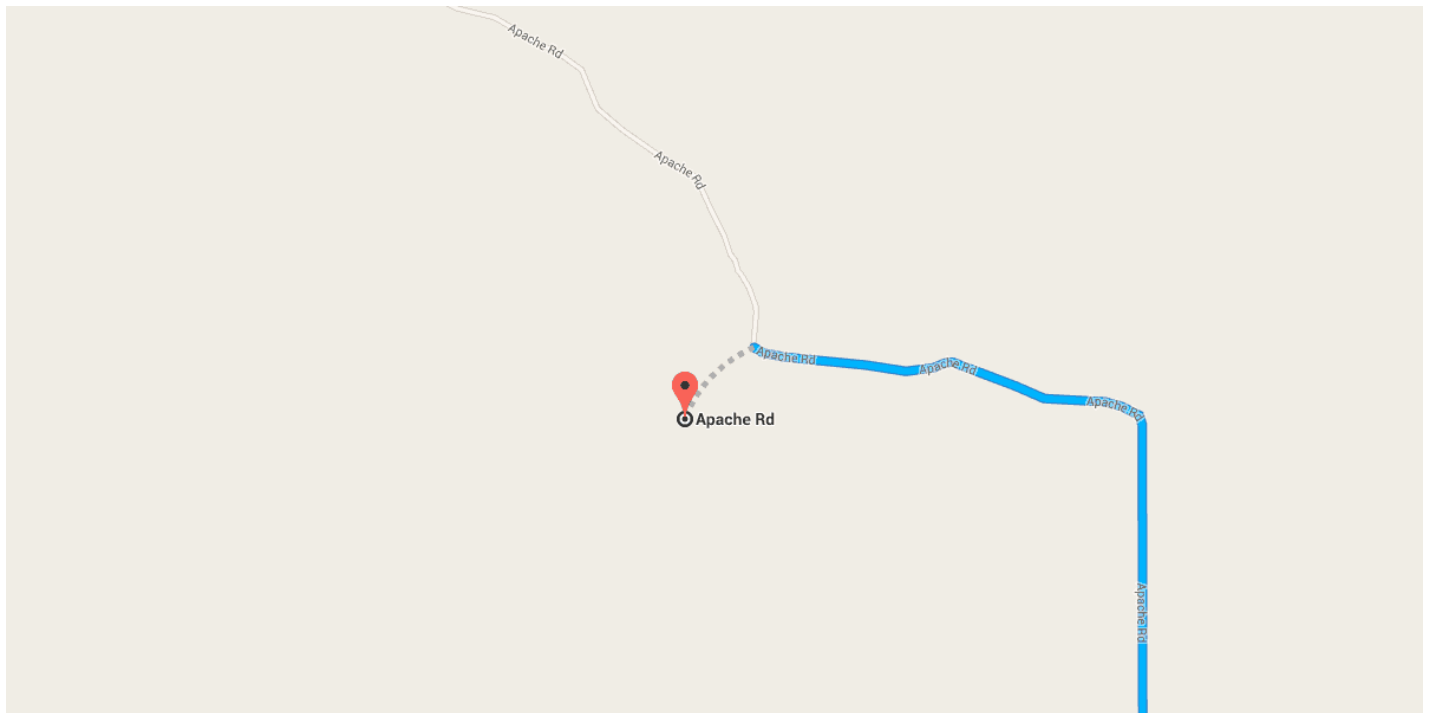


# Directions from El Paso, TX to Apache Rd

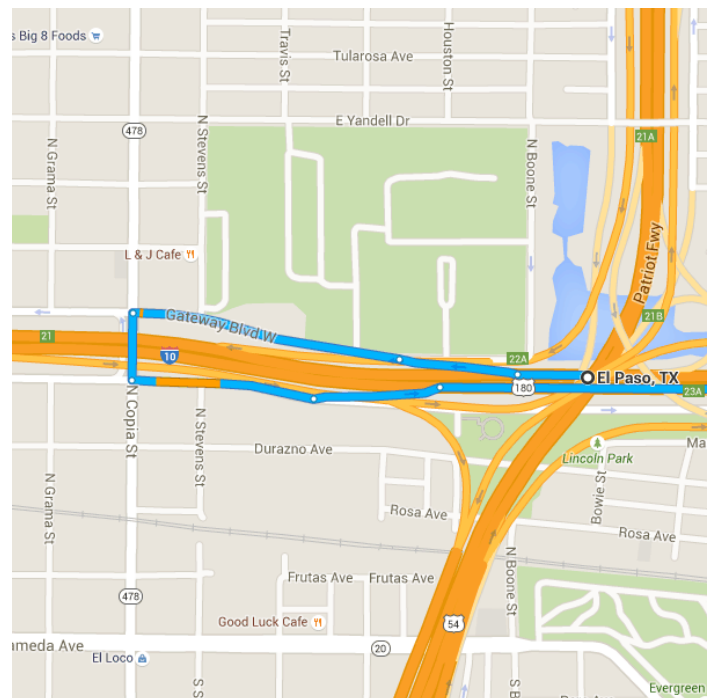


## ○ El Paso, TX

Get on **I-10 E** from **Gateway Blvd W**

0.9 mi / 2 min

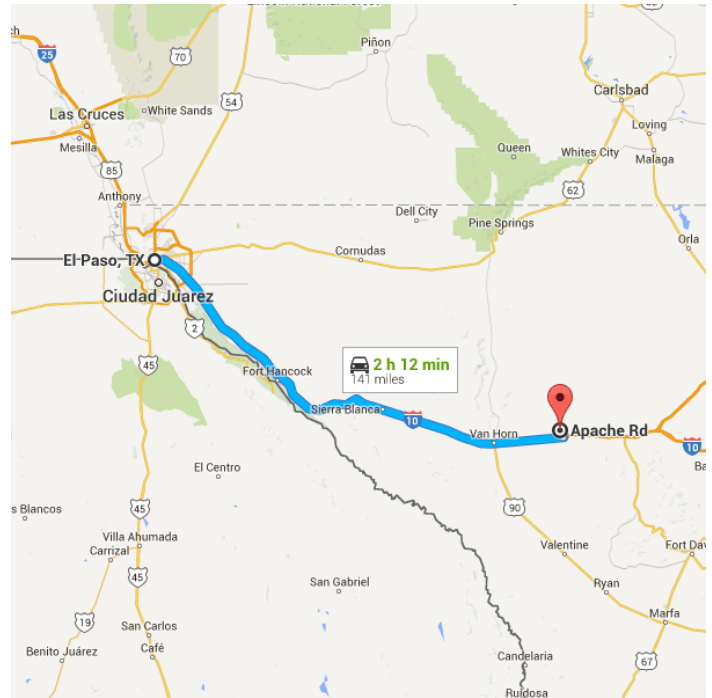
1. Head **west** on **I-10 W**  
400 ft
2. Take exit **22A** toward **TX-478/Copla St**  
0.1 mi
3. Continue onto **Gateway Blvd W**  
0.3 mi
4. Turn **left** onto **N Copia St**  
387 ft
5. Turn **left** at the 1st cross street onto **Gateway Blvd E**  
0.2 mi
6. Take the ramp on the **left** onto **I-10 E**  
0.1 mi



Follow **I-10 E** to **Moon Rd** in Culberson County. Take exit **159** from **I-10 E**

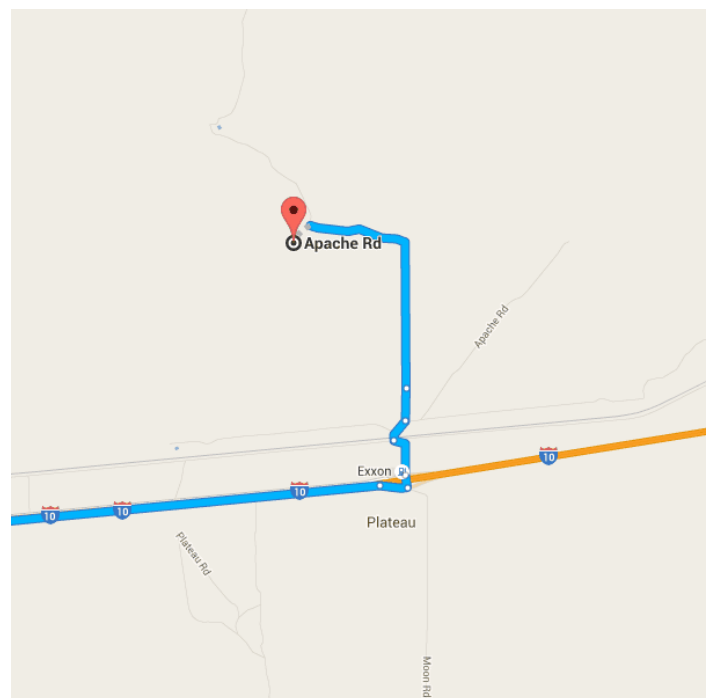
137 mi / 1 h 56 min

- 7. Merge onto **I-10 E**  
137 mi
- 8. Take exit **159** toward **Plateau**  
0.2 mi



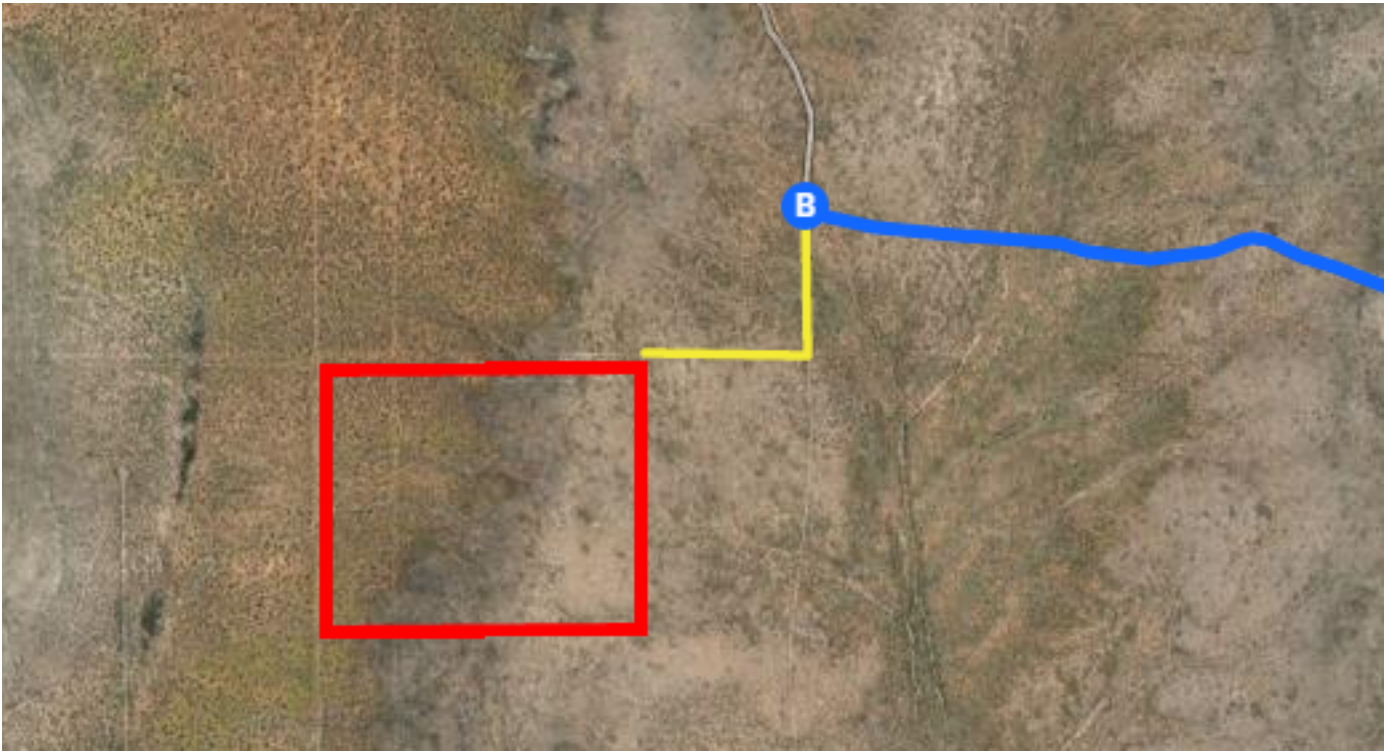
## Drive to Apache Rd

- 9. Turn **left** onto **Moon Rd**  
0.1 mi
- 10. Continue straight  
0.4 mi
- 11. Turn **right**  
0.2 mi
- 12. Slight **left** toward **Apache Rd**  
0.3 mi
- 13. Continue onto **Apache Rd**  
2.1 mi



**Apache Rd**  
Van Horn, TX 79855

These directions are for planning purposes only. You may find that construction projects, traffic, weather, or other events may cause conditions to differ from the map results, and you should plan your route accordingly. You must obey all signs or notices regarding your route.



### Continued Directions

At the end of the Google Earth directions turn left and continue along the dirt road for 0.14 of a mile (760 feet). Turn right and continue along the dirt road for 0.15 of a mile (792 feet). NE corner of property on left.