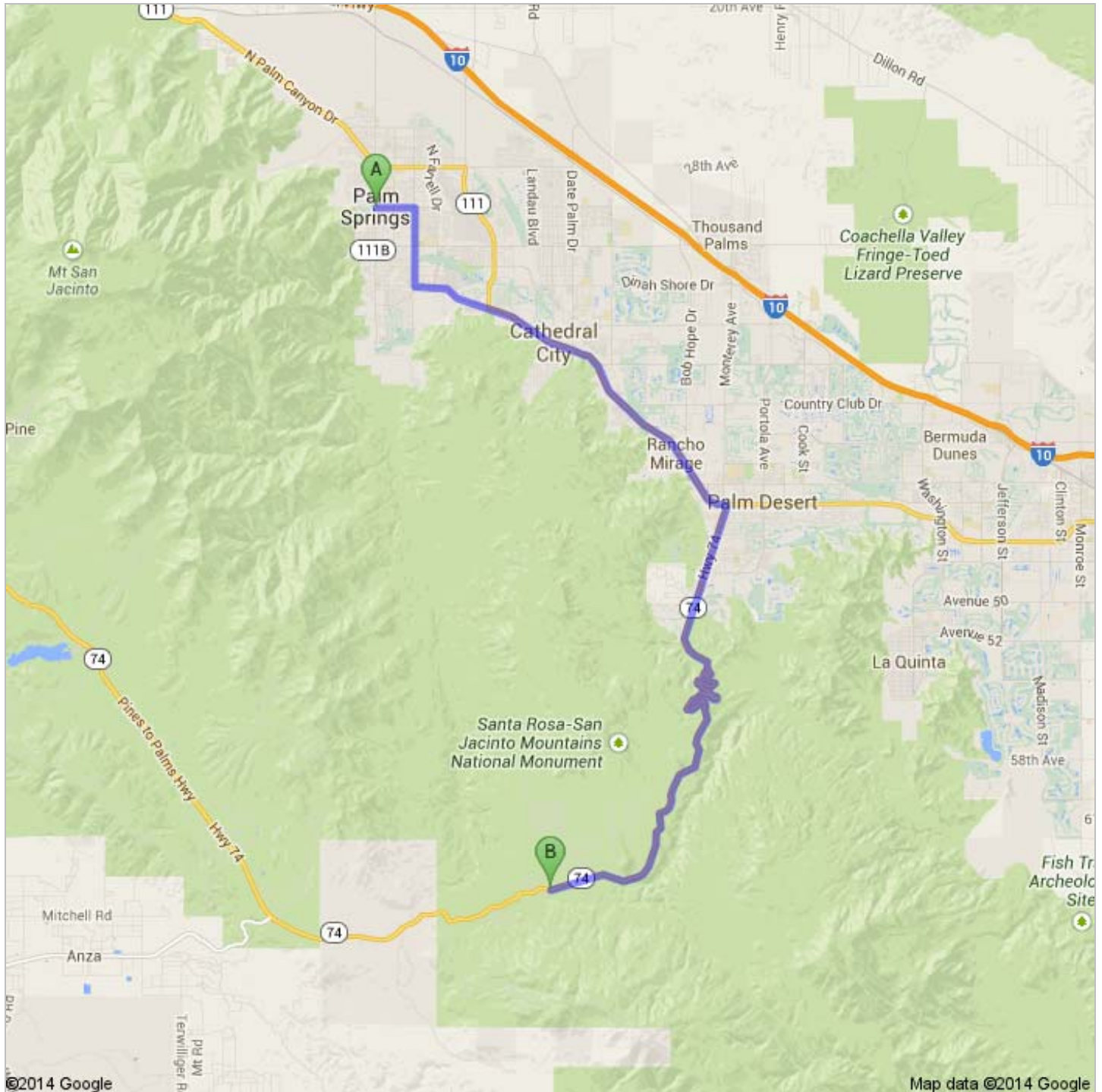




Directions to CA-74 W
29.4 mi – about 42 mins





Palm Springs, CA



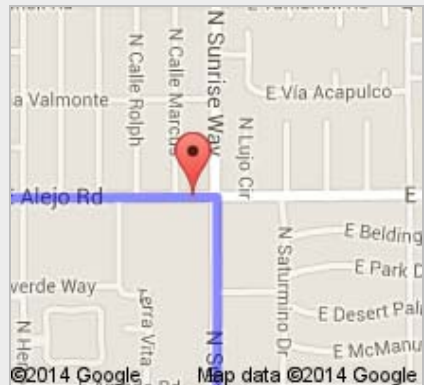
1. Head **east** on **E Alejo Rd** toward **N Calle Encilia**
About 2 mins

go 1.0 mi
total 1.0 mi



2. Turn right onto **N Sunrise Way**
About 4 mins

go 2.0 mi
total 3.0 mi



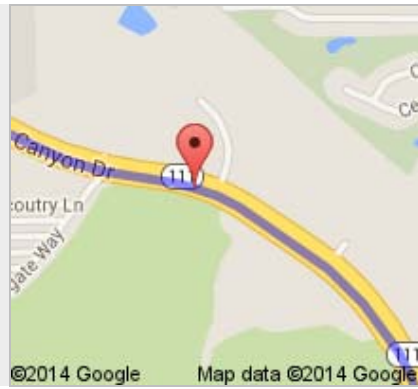
3. Turn left onto **E Palm Canyon Dr**
About 8 mins

go 4.8 mi
total 7.8 mi



4. Continue onto **CA-111 S**
About 8 mins

go 5.3 mi
total 13.2 mi



- 74** 5. Turn right onto **CA-74 W**
About 20 mins

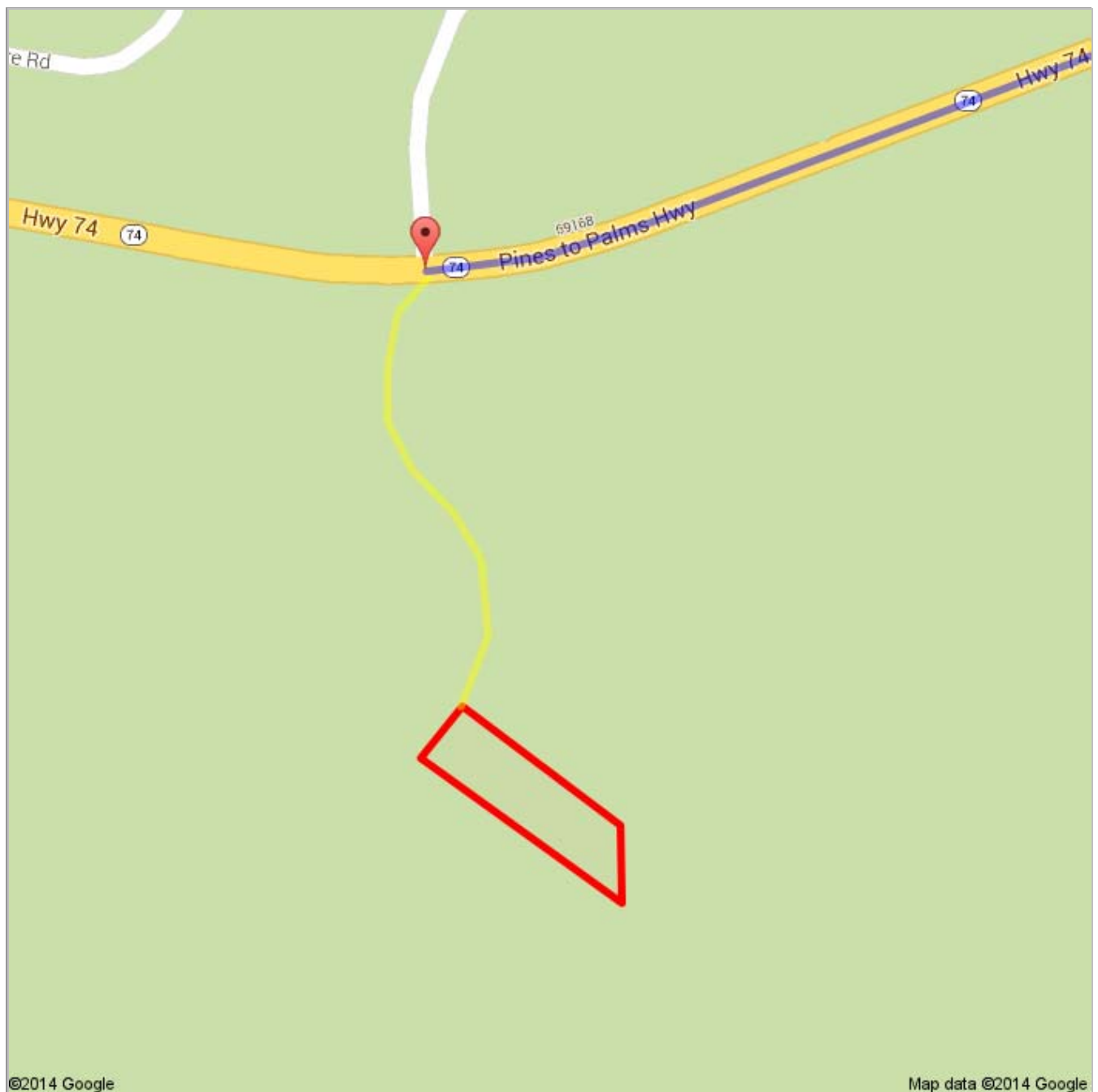
go 16.2 mi
total 29.4 mi



B CA-74 W

These directions are for planning purposes only. You may find that construction projects, traffic, weather, or other events may cause conditions to differ from the map results, and you should plan your route accordingly. You must obey all signs or notices regarding your route.
Map data ©2014 Google

Directions weren't right? Please find your route on maps.google.com and click "Report a problem" at the bottom left.



7842.kmz

Public · 0 views

Created on Apr 30 · By [Bryson](#) · Updated < 1 minute ago



Parcel 636074007



From: Palm Springs, CA

Driving directions to 33.57679, -116.46814



To: 33.57679, -116.46814



Continued Directions

Unfortunately Google Maps doesn't recognize some of the roads in the area. The yellow line represents continued directions from the Google Maps ending point to the outline of your property a distance of 0.20 of a mile.

At the end of the Google earth directions turn left and follow the dirt road for 0.20 of a mile.