

4433

Print this page in a more readable format: Click **Print** next to the lower-left corner of the map.



[Edit route](#)

Route: 129.9 miles, 2 hr 29 min

2 hr 55 min in current traffic conditions

[See best route based on traffic](#)

A Phoenix, AZ

1. Depart **W Washington St** toward S 3rd Ave 0.4 mi
2. Turn **right** onto **N 7th Ave** 0.2 mi
3. Bear **left** onto **W Grand Ave** 1.4 mi
MCDONALD'S on the corner
4. Keep **right** onto **US-60 / W Grand Ave** 51.3 mi
Pass CIRCLE K in 7.4 mi
5. Keep **left** toward **US-93** < 0.1 mi
6. Bear **right** onto **US-93** 1.2 mi
7. At roundabout, take **2nd** exit onto **US-93 / N Tegner St** 72.2 mi
8. Turn **right** onto **Golf Course Ave** 0.5 mi
Unpaved Road
Gated road
9. Turn **right** onto **Country Club Dr** 0.7 mi
Gated road
Unpaved Road
10. Bear **right** onto **CR-159** 0.7 mi
Unpaved Road
11. Turn **left** onto **Cholla Canyon Ranch Rd** 1.1 mi
UnPaved Road

12. Arrive at **34.69143, -113.56412** on the right

B

34.69143, -113.56412

These directions are subject to the Microsoft® Service Agreement and for informational purposes only. No guarantee is made regarding their completeness or accuracy. Construction projects, traffic, or other events may cause actual conditions to differ from these results. Map and traffic data © 2009 NAVTEQ™, AND™.

Print this page in a more readable format: Click **Print** next to the lower-left corner of the map.



[Edit route](#)

Route: 129.9 miles, 2 hr 29 min

2 hr 55 min in current traffic conditions

[See best route based on traffic](#)

Print this page in a more readable format: Click **Print** next to the lower-left corner of the map.



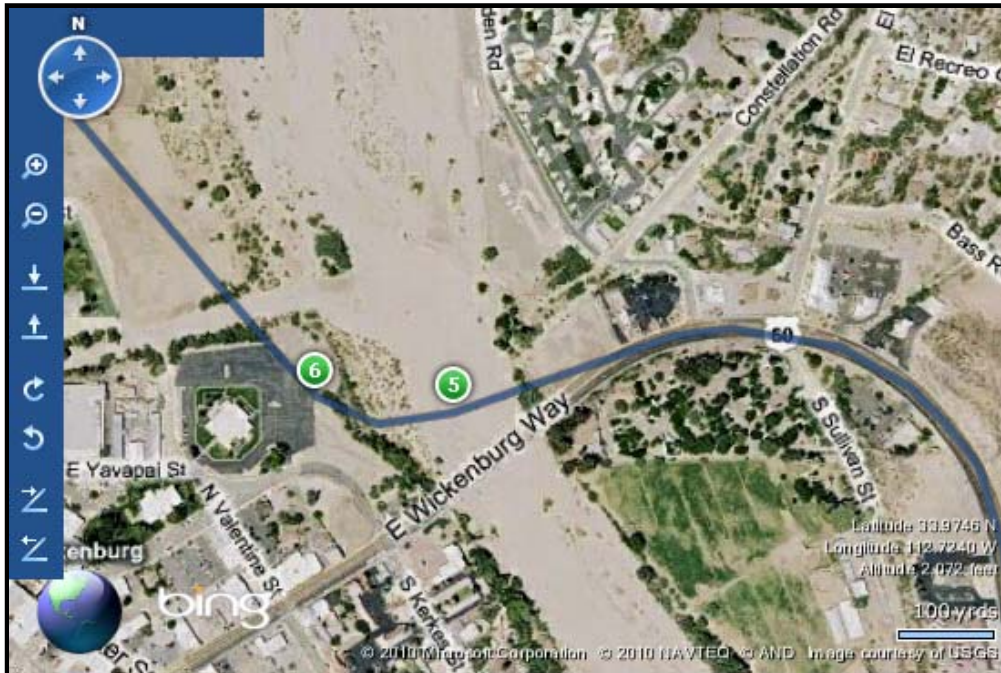
[Edit route](#)

Route: 129.9 miles, 2 hr 29 min

2 hr 55 min in current traffic conditions

[See best route based on traffic](#)

Print this page in a more readable format: Click **Print** next to the lower-left corner of the map.



[Edit route](#)

Route: 129.9 miles, 2 hr 29 min

2 hr 55 min in current traffic conditions

[See best route based on traffic](#)

A

Print this page in a more readable format: Click **Print** next to the lower-left corner of the map.



[Edit route](#)

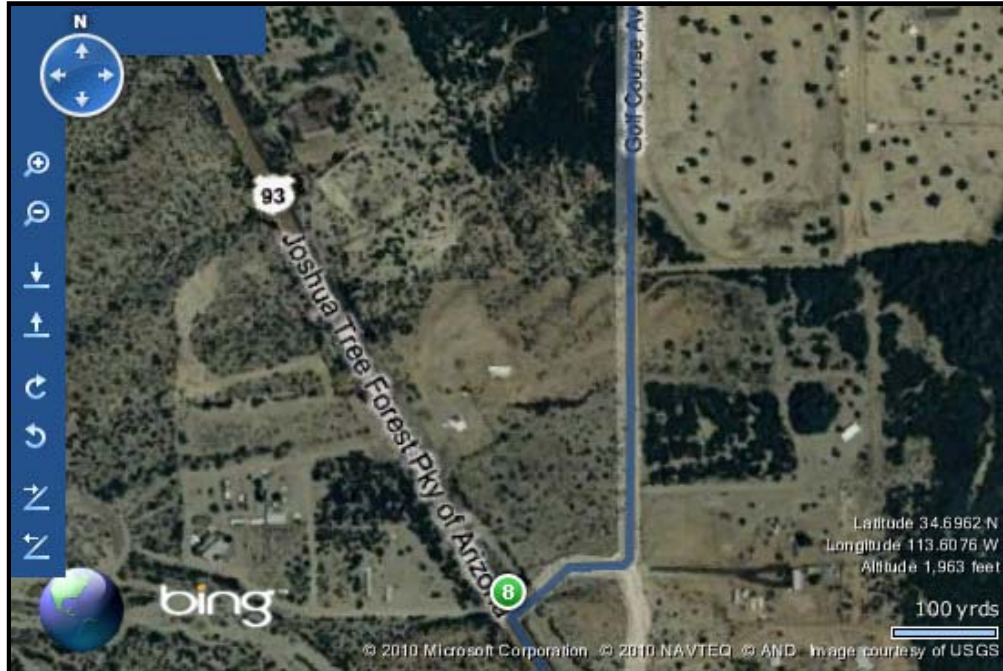
Route: 129.9 miles, 2 hr 29 min

2 hr 55 min in current traffic conditions

[See best route based on traffic](#)

A

Print this page in a more readable format: Click **Print** next to the lower-left corner of the map.



[Edit route](#)

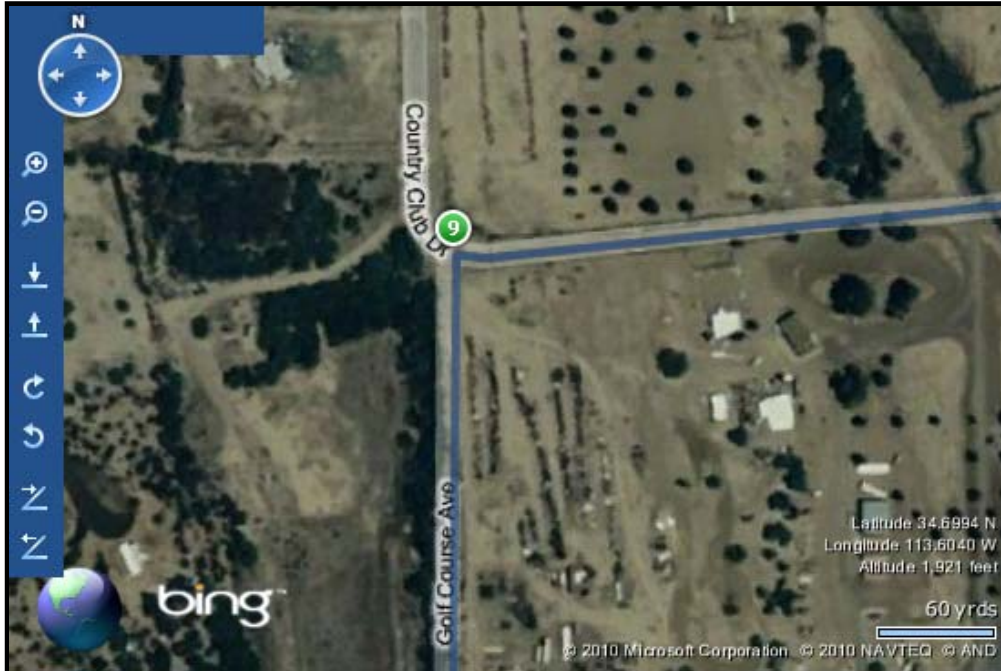
Route: 129.9 miles, 2 hr 29 min

2 hr 55 min in current traffic conditions

[See best route based on traffic](#)

A

Print this page in a more readable format: Click **Print** next to the lower-left corner of the map.



[Edit route](#)

Route: 129.9 miles, 2 hr 29 min

2 hr 55 min in current traffic conditions

[See best route based on traffic](#)

A

Print this page in a more readable format: Click **Print** next to the lower-left corner of the map.



[Edit route](#)

Route: 129.9 miles, 2 hr 29 min

2 hr 55 min in current traffic conditions

[See best route based on traffic](#)

A

Print this page in a more readable format: Click **Print** next to the lower-left corner of the map.



[Edit route](#)

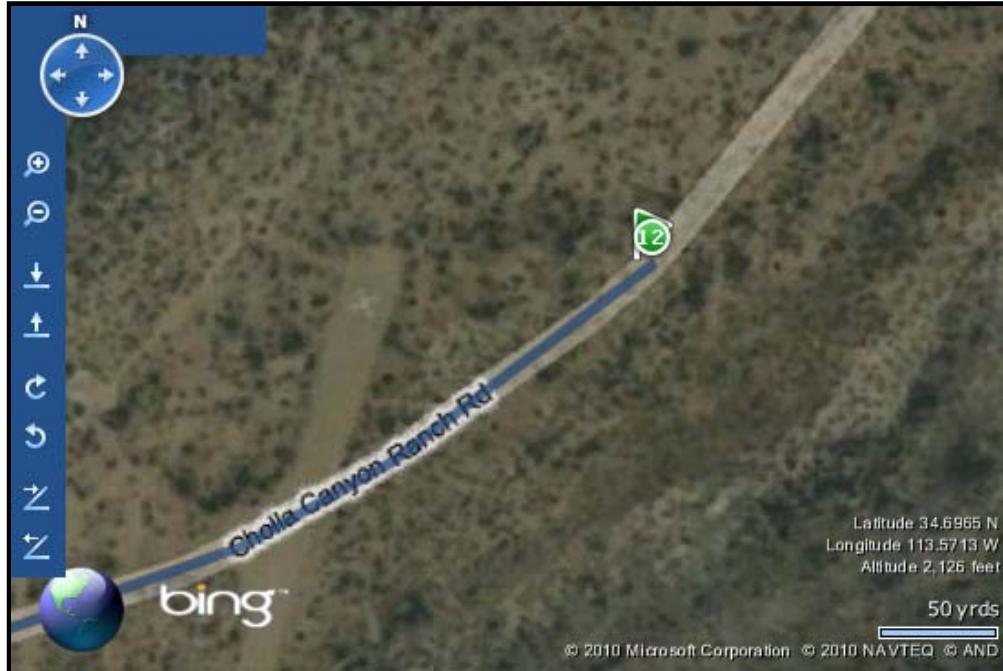
Route: 129.9 miles, 2 hr 29 min

2 hr 55 min in current traffic conditions

[See best route based on traffic](#)

A

Print this page in a more readable format: Click **Print** next to the lower-left corner of the map.



[Edit route](#)

Route: 129.9 miles, 2 hr 29 min

2 hr 55 min in current traffic conditions

[See best route based on traffic](#)

A