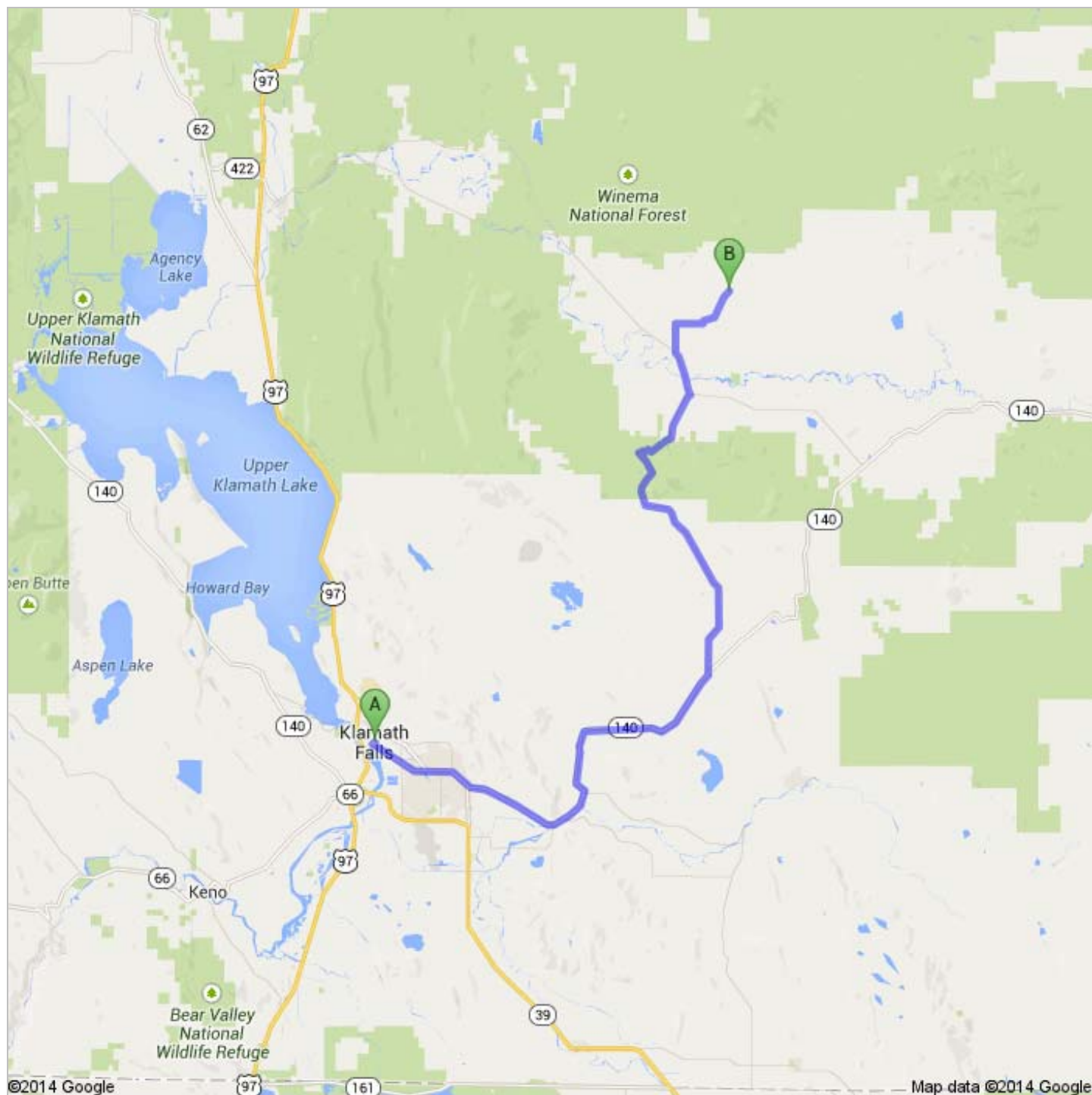




Directions to Unknown road  
44.9 mi – about 1 hour 20 mins





Klamath Falls, OR



1. Head **northwest** on **S 7th St** toward **OR-39 BUS S/US-97 BUS N**

go 164 ft  
total 164 ft



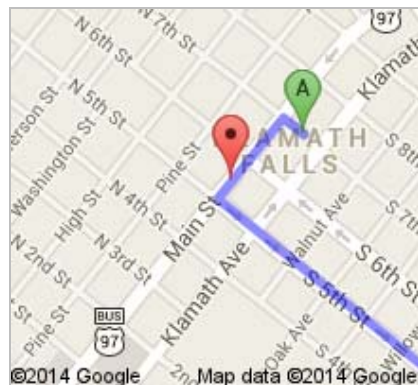
2. Take the 1st left onto **OR-39 BUS S/US-97 BUS S**  
About 2 mins

go 0.1 mi  
total 0.2 mi



3. Turn left at the 2nd cross street onto **OR-39 BUS S**  
About 6 mins

go 2.8 mi  
total 2.9 mi



4. Continue onto **S 6th St**  
About 4 mins

go 2.2 mi  
total 5.2 mi



5. Continue onto **OR-140 E**  
About 19 mins

go 16.5 mi  
total 21.6 mi



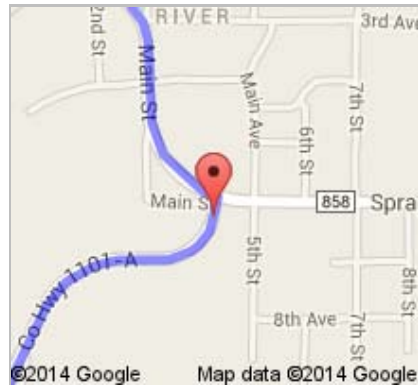
6. Turn left onto **Bliss Rd**  
About 28 mins

go 16.5 mi  
total 38.1 mi



7. Turn left onto **Sprague River Rd**  
About 3 mins

go 2.1 mi  
total 40.2 mi



8. Turn right onto **Sprague River Dr**  
About 3 mins

go 1.3 mi  
total 41.5 mi



9. Turn right onto **Arrowhead Ln**  
About 6 mins

go 1.4 mi  
total 42.9 mi



10. Turn right onto **Moccasin Ln**  
About 2 mins

go 0.5 mi  
total 43.4 mi



11. Turn left  
About 7 mins

go 1.5 mi  
total 44.9 mi



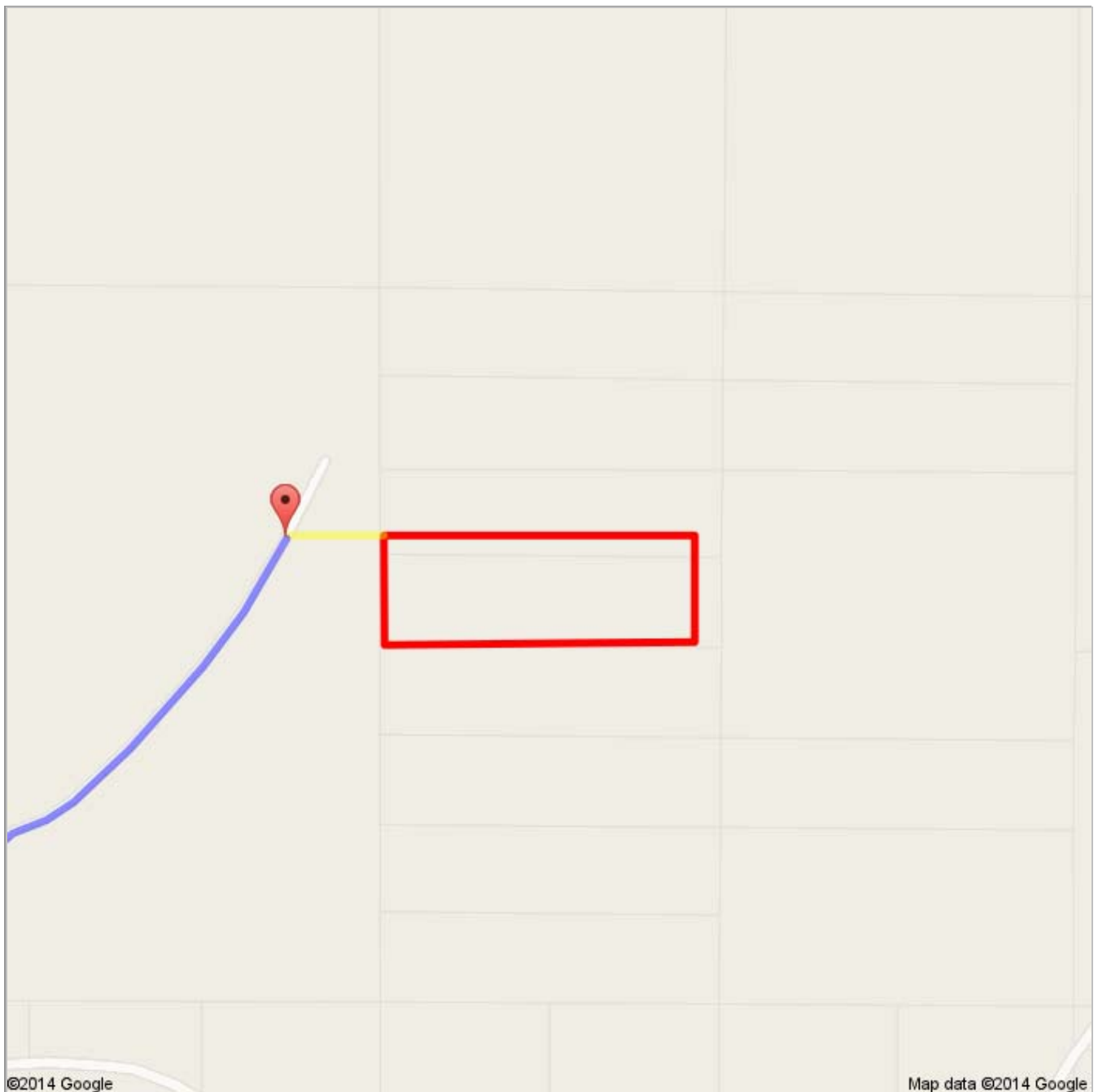
Unknown road



These directions are for planning purposes only. You may find that construction projects, traffic, weather, or other events may cause conditions to differ from the map results, and you should plan your route accordingly. You must obey all signs or notices regarding your route.

Map data ©2014 Google

Directions weren't right? Please find your route on [maps.google.com](https://maps.google.com) and click "Report a problem" at the bottom left.



## 4923.kmz

Public · 0 view s

Created on Jun 26 · By [Bryson](#) · Updated < 1 minute ago



Polygon Measure



From: Klamath Falls, OR



Driving directions to Unknown road



To: Unknown road



Continued Directions

Unfortunately Google Maps doesn't recognize some of the roads in the area. The yellow line represents continued

directions from the Google Maps ending point to the outline of your property a distance of 350 feet.

At the end of the Google directions turn directly east and continue 350 feet.  
NW corner of property.