

Map data ©2025 Google, INEGI 10 km

New Orleans  
Louisiana, USA

Get on I-10 E from Lasalle St

- 3 min (0.7 mi)
  - ↑ 1. Head west on Poydras St toward S Liberty St/Poydras Plz
 

---

 0.2 mi
  - ↘ 2. Turn right onto Lasalle St
 

---

 0.3 mi
  - ↙ 3. Turn left onto Tulane Ave
 

---

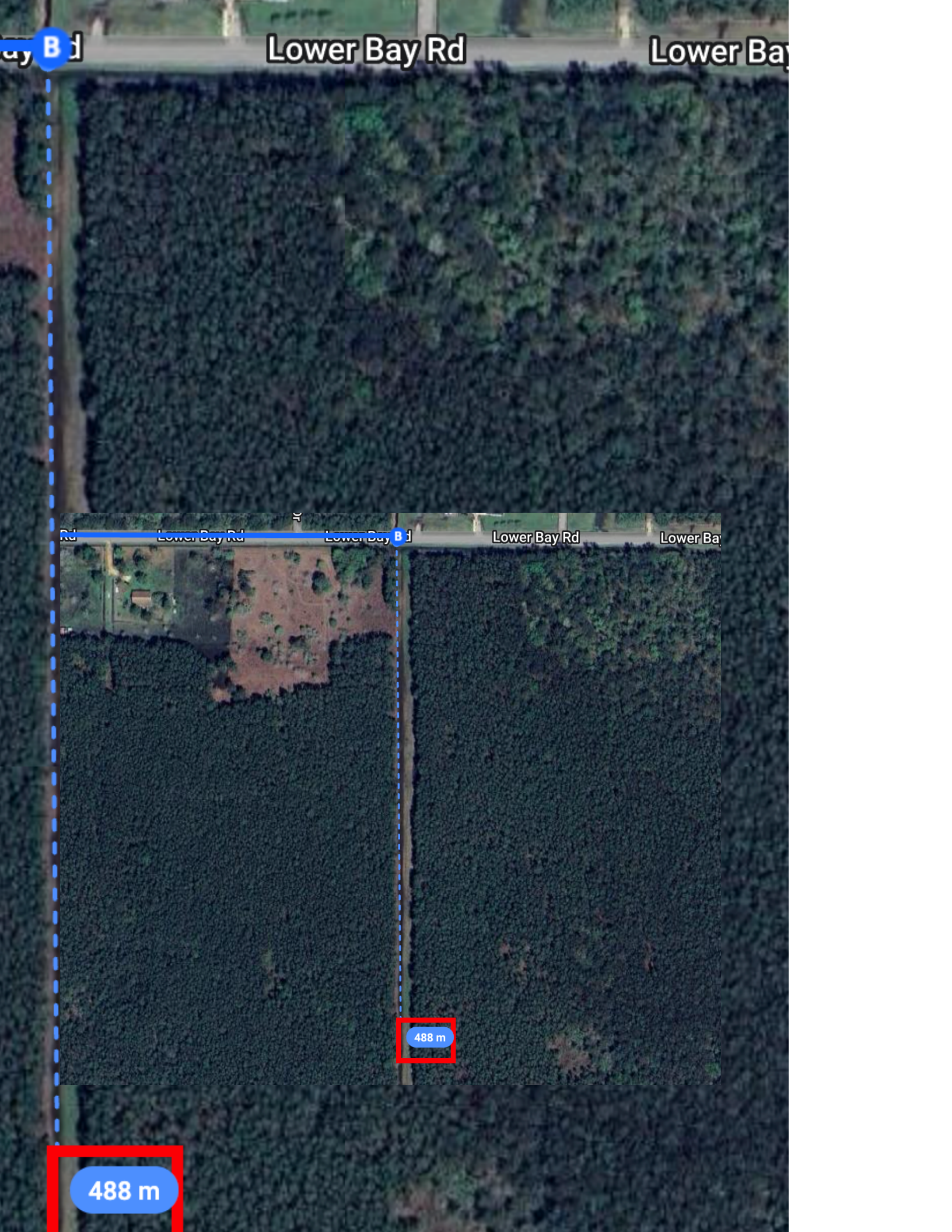
 0.1 mi
  - ⬆ 4. Use the right lane to take the Interstate 10 E ramp to Slidell
 

---

 0.2 mi

Follow I-10 E to MS-607 S in Hancock County. Take exit 2 from I-10 E

36 min (41.5 mi)



Lower Bay Rd

Lower Bay

B

Lower Bay Rd Lower Bay B Lower Bay Rd Lower Ba

488 m

488 m