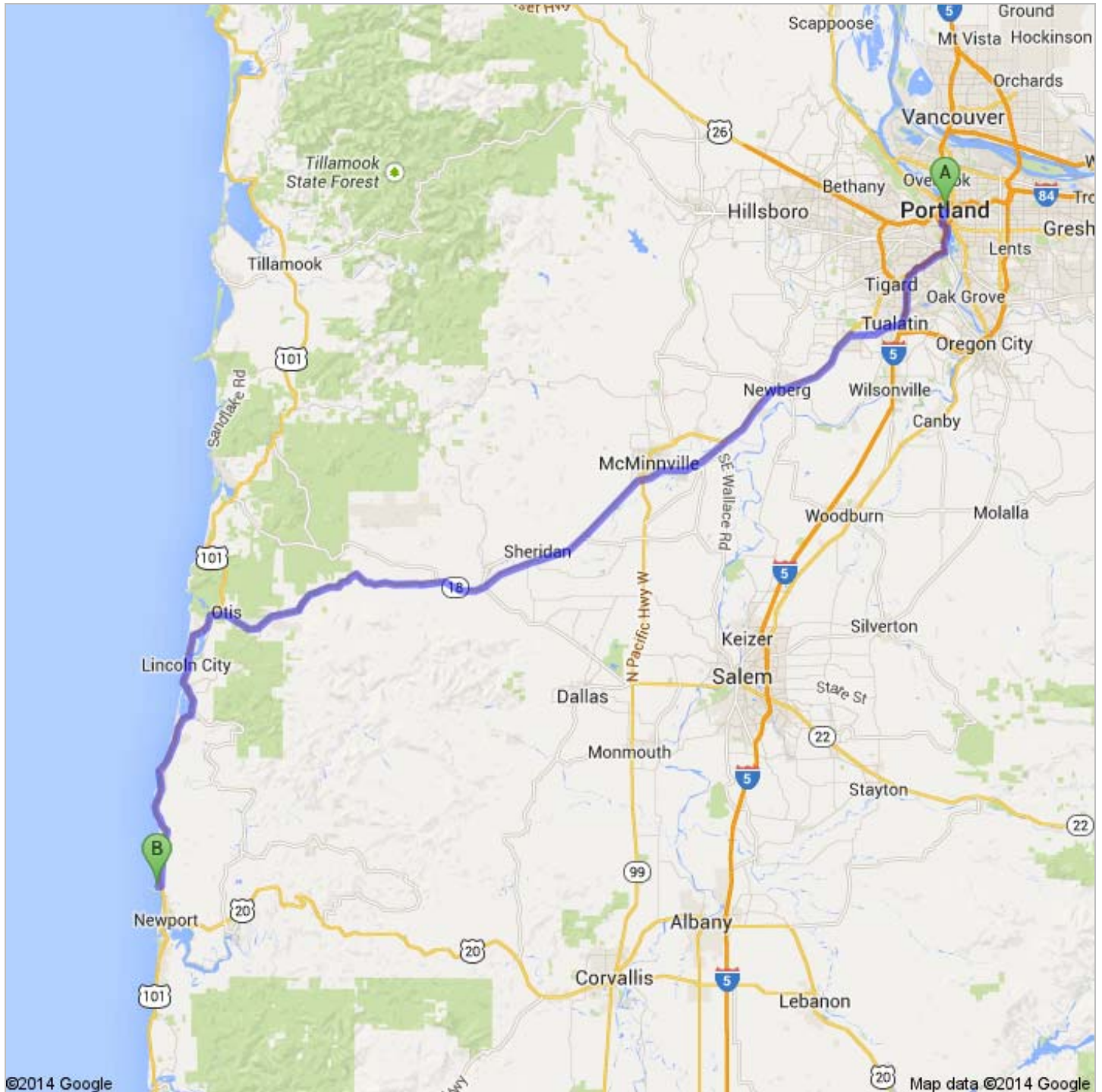
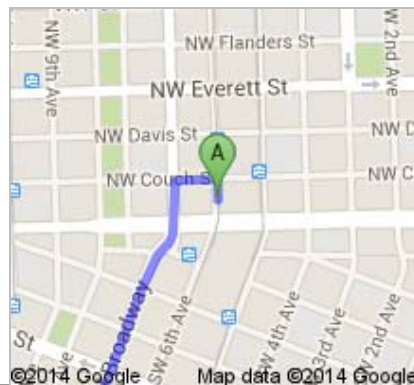




Directions to NW 59th St
111 mi – about 2 hours 24 mins

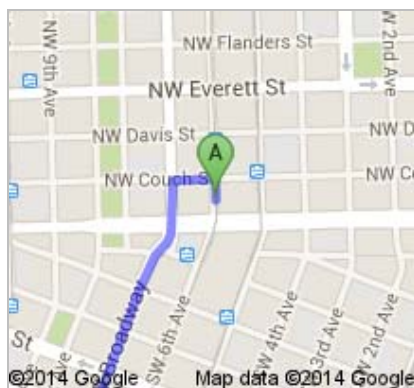


 Portland, OR



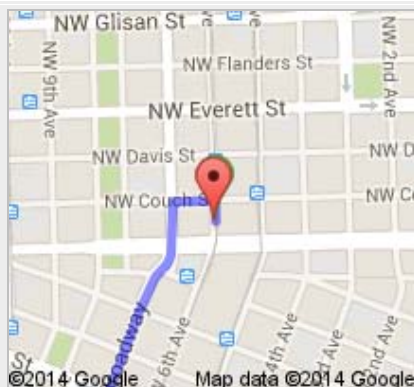
1. Head **north** on **NW 6th Ave** toward **NW Couch St**

go 118 ft
total 118 ft



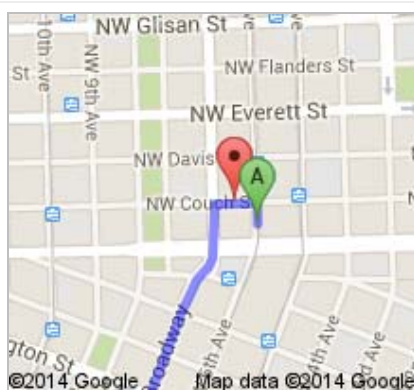
2. Take the 1st left onto **NW Couch St**

go 246 ft
total 364 ft



3. Take the 1st left onto **NW Broadway**
About 4 mins

go 1.1 mi
total 1.1 mi



4. Merge onto **I-405 S** via the ramp on the left to **I-84**

go 0.4 mi
total 1.5 mi



5. Take the exit on the left onto **I-5 S** toward **Salem**
About 12 mins

go 10.5 mi
total 12.1 mi



6. Take exit **289** toward **Tualatin/Sherwood**

go 0.3 mi
total 12.3 mi



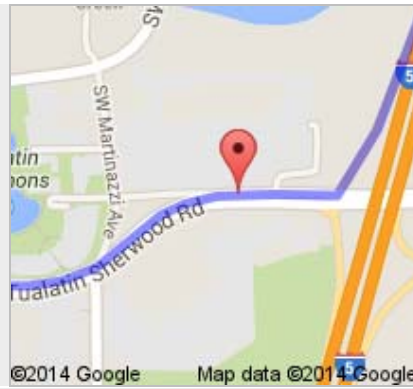
7. Turn right onto **SW Nyberg St**

go 0.1 mi
total 12.5 mi



8. Slight left onto **SW Tualatin Sherwood Rd**
About 8 mins

go 4.5 mi
total 17.0 mi



99

9. Turn left onto **OR-99 W S**
About 21 mins

go 14.9 mi
total 31.9 mi



18

10. Turn left onto **OR-18 W/OR-233 S**
Continue to follow OR-18 W
About 58 mins

go 52.5 mi
total 84.4 mi



11. Take the ramp onto **US-101 S/Oregon Coast Hwy**
Continue to follow Oregon Coast Hwy
About 39 mins

go 26.8 mi
total 111 mi



12. Turn right onto **NW 60th St**

go 0.2 mi
total 111 mi



13. **NW 60th St** turns left and becomes **NW Rhododendron St**

go 243 ft
total 111 mi



14. Turn right onto **NW 59th St**

go 161 ft
total 111 mi



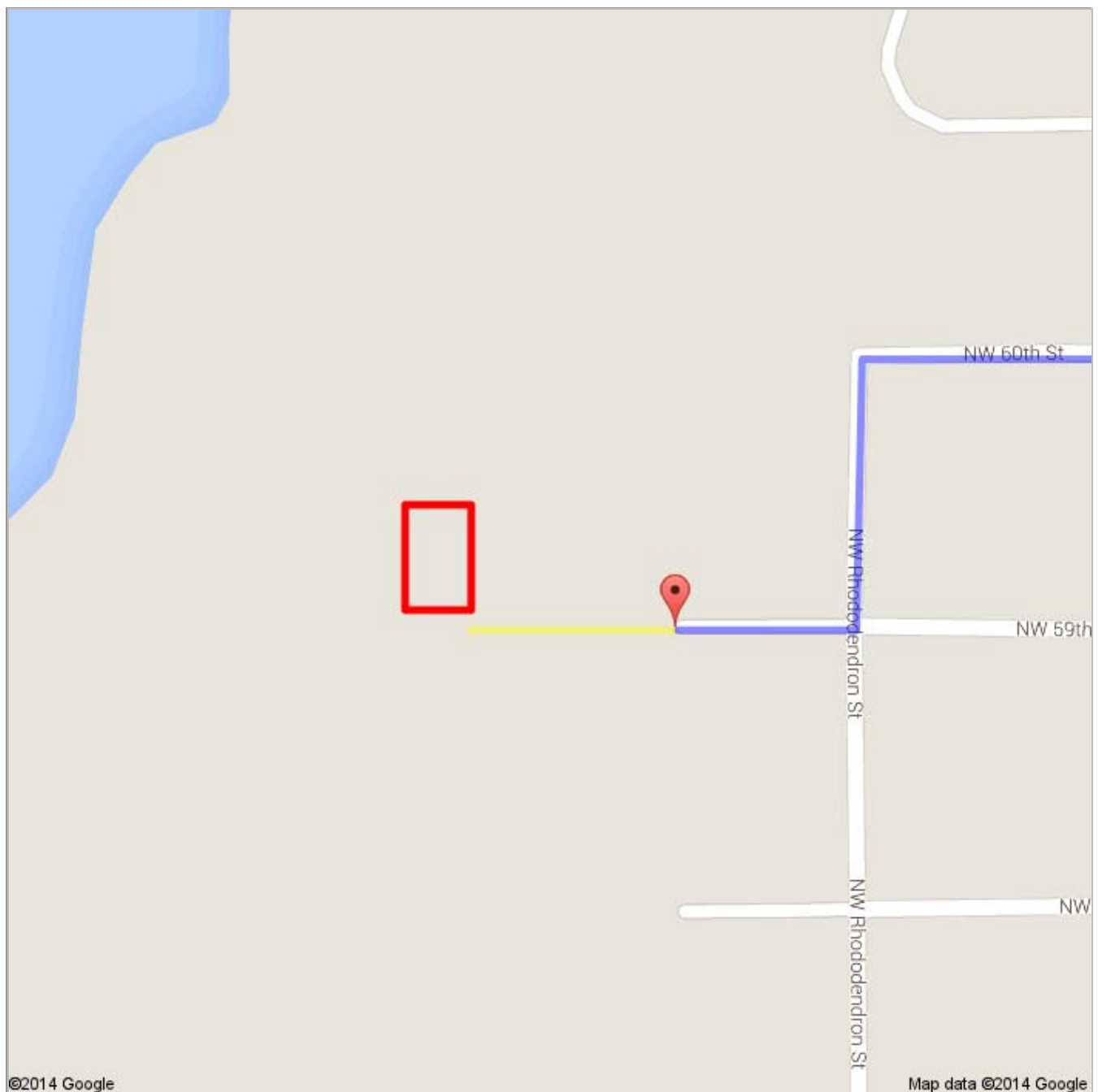
NW 59th St



These directions are for planning purposes only. You may find that construction projects, traffic, weather, or other events may cause conditions to differ from the map results, and you should plan your route accordingly. You must obey all signs or notices regarding your route.

Map data ©2014 Google

Directions weren't right? Please find your route on maps.google.com and click "Report a problem" at the bottom left.



4046.kmz

Public · 0 views

Created on Jun 6 · By [Bryson](#) · Updated < 1 minute ago



Polygon Measure



From: Portland, OR



Driving directions to NW 59th St



To: NW 59th St



Continued Directions

Unfortunately Google Maps doesn't recognize some of the roads in the area. The yellow line represents continued

directions from the Google Maps ending point to the outline of your property a distance of 180 feet.

At the end of the Google directions continue straight for 180 feet. SE corner of property on right.