

Map data ©2018 Google 10 mi

Memphis

Tennessee

Get on I-40 W

- ↑ 1. Head west on Poplar Ave toward N 2nd St 2 min (0.8 mi)

- ↗ 2. Use the left lane to turn right onto N Front St 0.2 mi

- ↖ 3. Turn left to merge onto I-40 W 0.3 mi

- ↖ 3. Turn left to merge onto I-40 W 0.4 mi

Follow I-40 W and US-79 S to AR-1 S in Marianna

- ↖ 4. Merge onto I-40 W 58 min (57.4 mi)
i Entering Arkansas

- ↖ 5. Keep left at the fork to stay on I-40 W, follow signs for Little Rock 7.8 mi

- ↘ 6. Take exit 265 for AR-218/US-79 toward Hughes 12.0 mi

- ↙ 7. Turn left onto AR-218 W/US-79 S (signs for US-70/Shearerville/Hughes) 0.2 mi
i Continue to follow US-79 S

- ↙ 7. Turn left onto AR-218 W/US-79 S (signs for US-70/Shearerville/Hughes) 37.4 mi

- ↑ 8. Continue straight onto AR-1 S 16 min (15.4 mi)

9. Turn right onto US 49 N 10 min (9.0 mi)

Continue on AR-1 S. Drive to E Van Buren Ave in Gould

10. Turn left onto AR-1 S 1 h 14 min (67.6 mi)

11. Turn right onto AR-212 W 56.1 mi

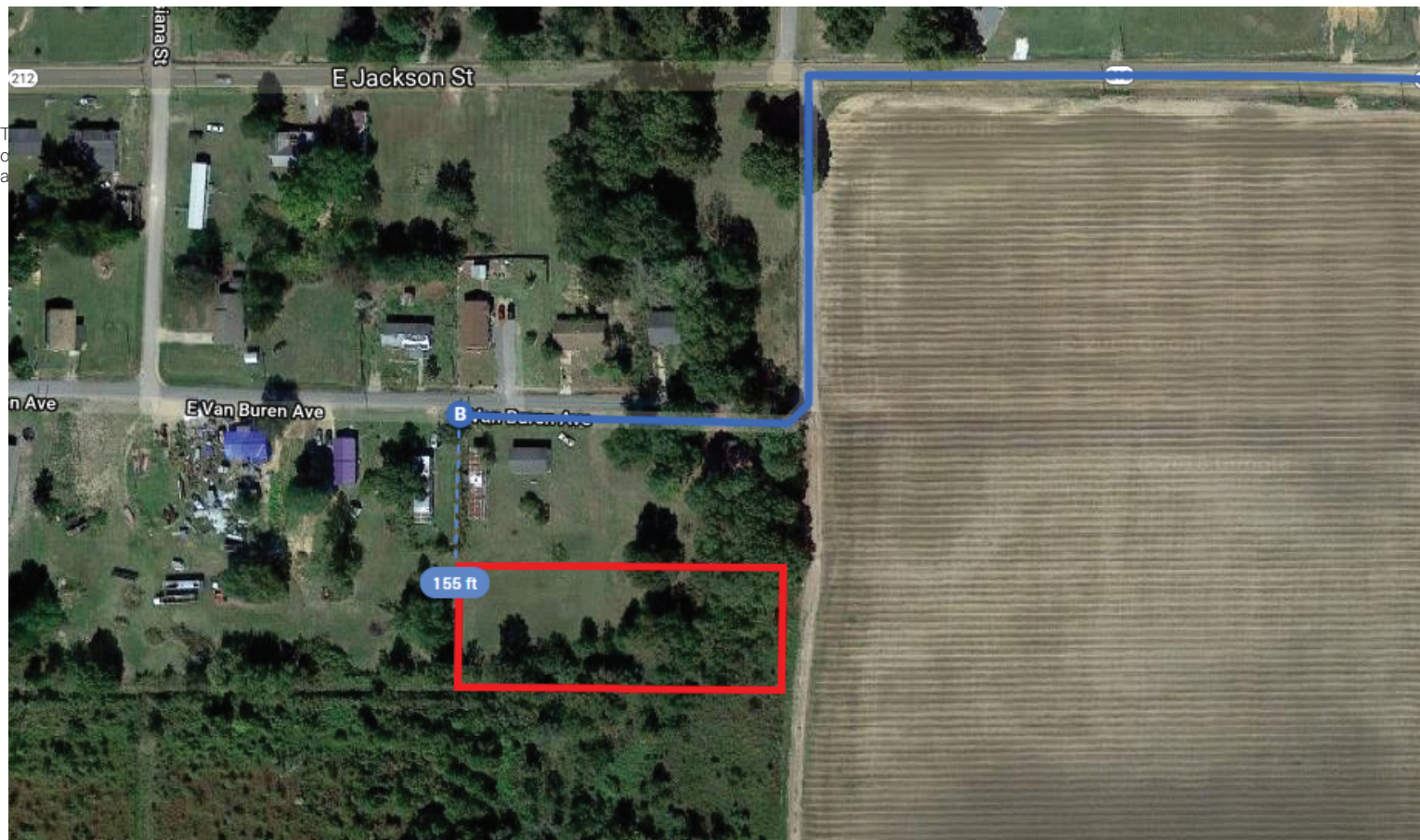
12. Turn left to stay on AR-212 W 3.4 mi

13. Turn left toward E Van Buren Ave 7.9 mi

14. Continue onto E Van Buren Ave 387 ft

i Destination will be on the left

344 ft



Property located 155 feet from E Van Buren Ave