

Imagery ©2017 Google, Map data ©2017 Google 2 mi

## Kingman

Arizona

Get on I-40 W from E Andy Devine Ave/Historic Rte 66 and W Beale St

- ↑ 1. Head south on N 4th St toward E Andy Devine Ave/Historic Rte 66 5 min (1.3 mi)
- ➡ 2. Turn right at the 1st cross street onto E Andy Devine Ave/Historic Rte 66 292 ft
- ↑ 3. Continue straight onto Ella's Pl 0.4 mi
- ➡ 4. Turn left onto W Beale St 295 ft
- ⤴ 5. Turn left to merge onto I-40 W toward Los Angeles 0.4 mi
- ⤴ 6. Turn left to merge onto I-40 W toward Los Angeles 0.3 mi

Follow I-40 W to Cal-Ari Dr in Yucca. Take exit 25 from I-40 W

- ⤴ 6. Merge onto I-40 W 19 min (23.4 mi)
- ➡ 7. Take exit 25 toward Alamo Rd 23.1 mi
- ➡ 8. Take exit 25 toward Alamo Rd 0.3 mi

Take Alamo Rd to Apache Rd

4 min (1.8 mi)

8. Turn left onto Cal-Ari Dr

0.2 mi

9. Turn right onto Alamo Rd

1.4 mi

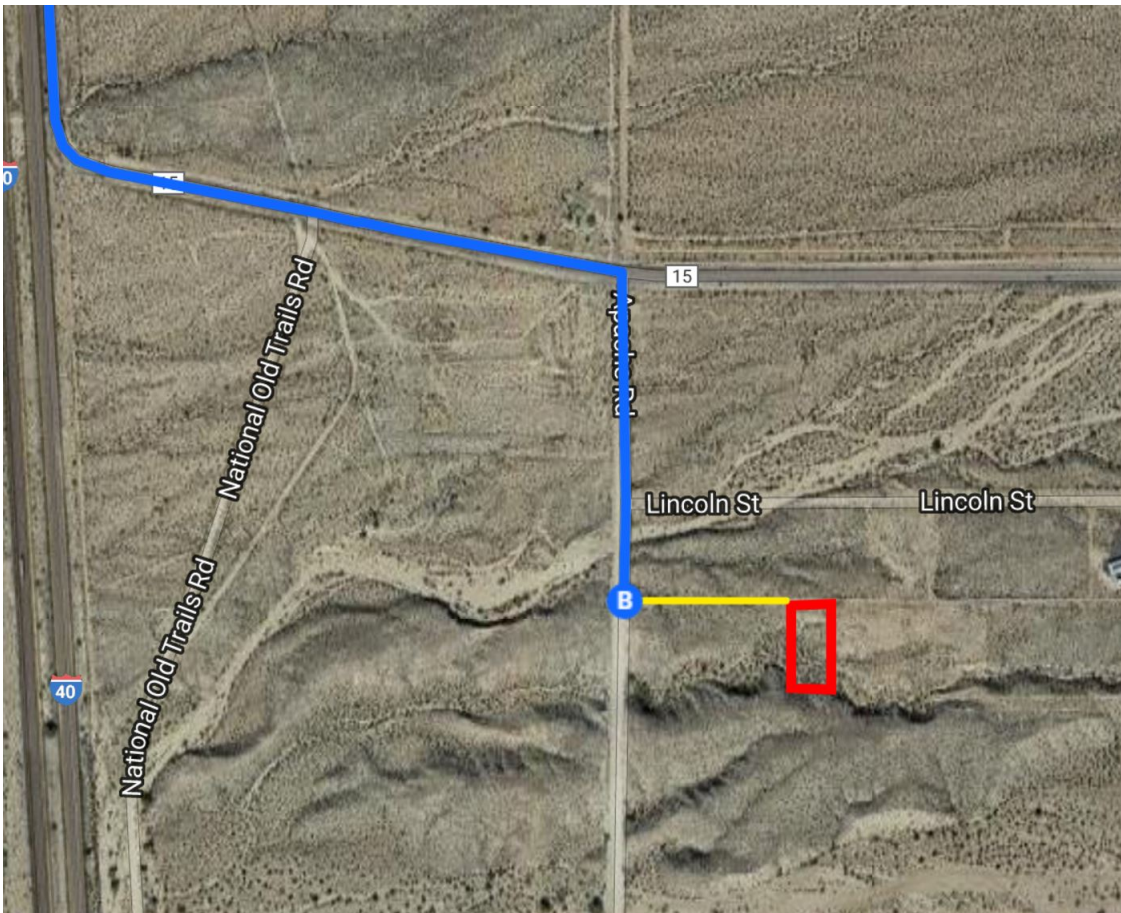
10. Turn right onto Apache Rd

 Destination will be on the right

0.2 mi

## 13077-13199 Apache Rd

Yucca, AZ 86438



## Continued Directions

At the end of the Google Earth Directions turn left and continue along the dirt road for 520 feet. NW corner of property on right.