

# Flagstaff, AZ

## Continue to I-40 W

- 
- 9 min (5.1 mi)
1. Head west on Historic Rte 66 toward N Humphreys St  

---

0.6 mi
  2. Turn right onto I-40BL W/Historic Rte 66 (signs for Los Angeles/Interstate 40 W/Interstate 40 Business/US-66 W)  

---

4.4 mi

## Follow I-40 W to I-40BL E in Seligman. Take exit 121 from I-40 W

- 
- 57 min (70.1 mi)
3. Merge onto I-40 W  

---

69.8 mi
  4. Take exit 121 for Interstate 40 Business Loop toward AZ-66/Seligman/Peach Springs  

---

0.2 mi

## Take AZ-66 W/Historic Rte 66, Fort Rock Rd and Vía De Oro to Dorado Rd

- 
- 32 min (14.7 mi)
5. Turn right onto I-40BL E  

---

1.1 mi
  6. Turn right onto AZ-66 W/Historic Rte 66 (signs for Peach Springs)  

---

2.3 mi
  7. Turn left onto Fort Rock Rd  

---

6.3 mi
  8. Turn right onto Vía De Oro Pkwy  

---

1.2 mi
  9. Continue straight onto Vía De Oro  

---

0.3 mi
  10. Continue onto Vía De Oro Pkwy  

---

0.4 mi
  11. Continue onto Vía De Oro  

---

0.9 mi
  12. Turn right onto Corona Cir/Vía De Oro  
[i Continue to follow Vía De Oro](#)  

---

0.7 mi
  13. Continue onto Valley Pkwy  

---

0.2 mi
  14. Continue straight onto Vía De Oro  

---

0.8 mi
  15. Turn right at Campana  

---

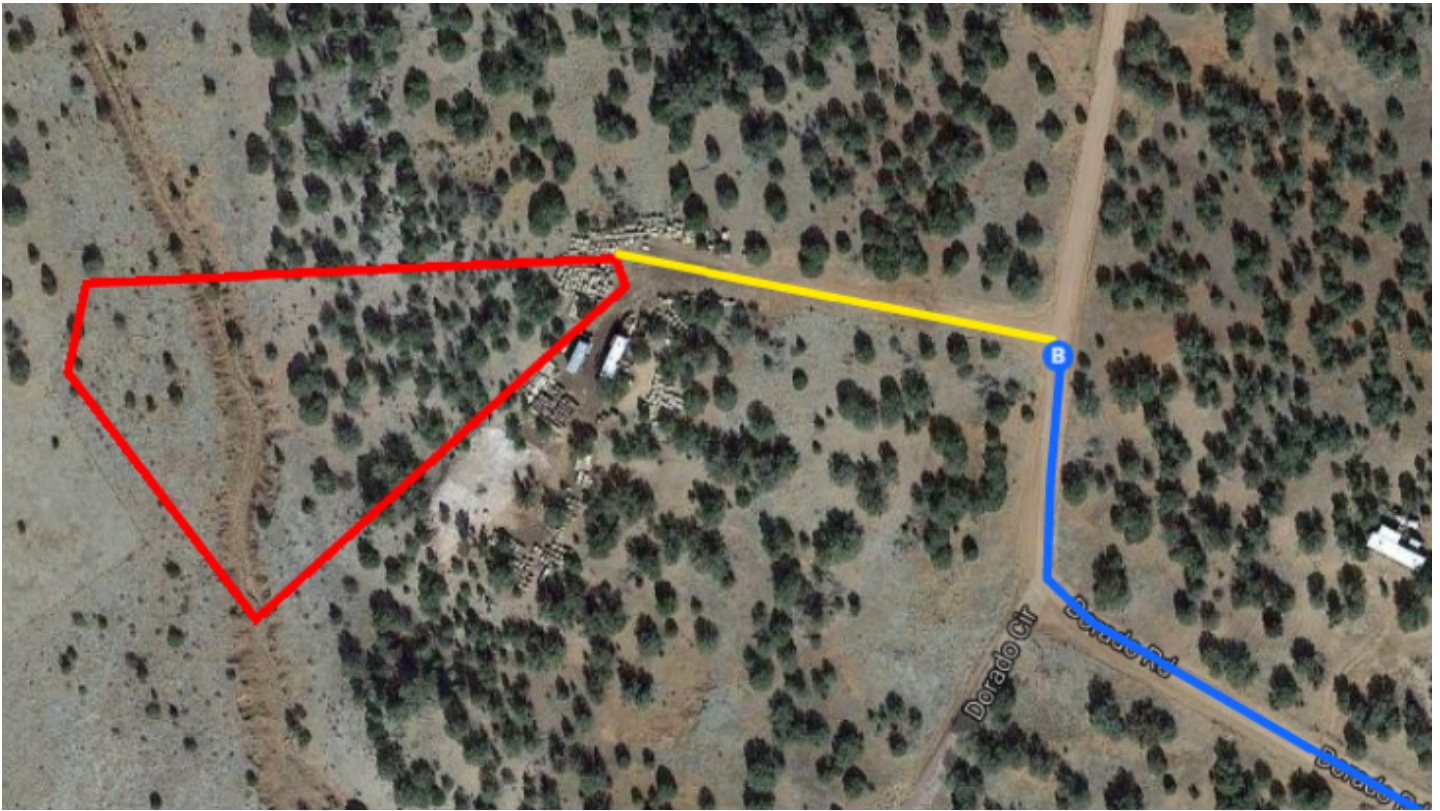
0.3 mi
  16. Turn left onto Dorado Rd  

---

0.2 mi

## 33340 North Lana Circle

Seligman, AZ 86337



### Continued Directions

At the end of the Google Earth directions turn left along the dirt road and continue for 400 ft to the end of the Cul-De-Sac.