

# Los Angeles, CA

## Get on US-101 N from N Broadway

- 3 min (0.7 mi)
- ↑

1. Head northwest on W 1st St toward S Spring St

0.1 mi
- ➡

2. Turn right onto N Broadway

0.2 mi
- ↑

3. Continue straight to stay on N Broadway

0.2 mi
- ⤴

4. Turn right to merge onto US-101 N toward I-110 N

0.2 mi

## Continue on US-101 N. Take CA-170 N/Hwy 170 N/Hollywood Fwy, I-5 N and CA-14 N to Sierra Hwy. Take exit 30 from CA-14 N

- 52 min (55.5 mi)
- ⤴

5. Merge onto US-101 N

10.1 mi
- ⤴

6. Keep left at the fork to continue on CA-170 N/Hwy 170 N/Hollywood Fwy, follow signs for Sacramento

6.0 mi
- ⤴

7. Use any lane to take exit 11B for Interstate 5 N toward Sacramento

0.9 mi
- ⤴

8. Merge onto I-5 N

1.1 mi
- ⤴

9. Keep left to stay on I-5 N

0.9 mi
- ⤴

10. Keep left to stay on I-5 N

4.8 mi
- ⤴

11. Keep left at the fork to stay on I-5 N

1.5 mi
- ➡

12. Use the right 3 lanes to take exit 162 for State Route 14 N/Antelope Valley Freeway toward Palmdale/Lancaster

0.6 mi
- ↑

13. Continue onto CA-14 N

28.9 mi
- ➡

14. Take exit 30 toward Pearblossom Hwy

0.7 mi

## Take Pearblossom Hwy and 90th St E to E Ave F 8

- 34 min (24.3 mi)
- ⤴

15. Merge onto Sierra Hwy

0.8 mi
- ↑

16. Continue onto Pearblossom Hwy

4.4 mi
- ↑

17. Continue straight onto E Ave T

17. Continue straight onto E Ave F 7

3.2 mi

18. Turn left onto 87th St E

0.6 mi

19. Continue straight onto 90th St E

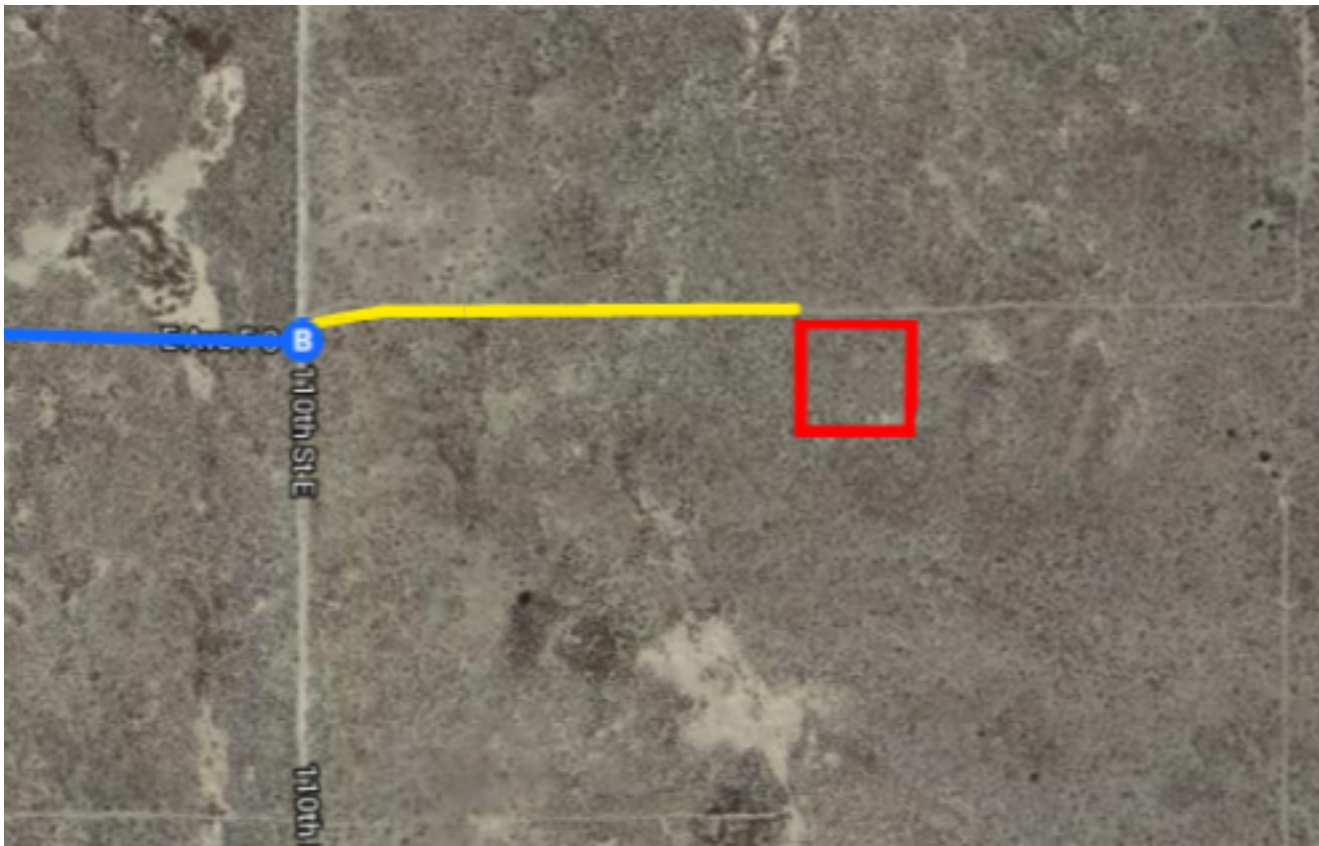
13.3 mi

20. Turn right onto E Ave F 8

2.0 mi

## 110 Avenue F9

Lancaster, CA 93535



### Continued Directions

At the end of the Google Earth directions turn left on 110th St and then take an immediate right onto the unnamed dirt road. Continue for 1/4 of a mile. NW corner of property on right.